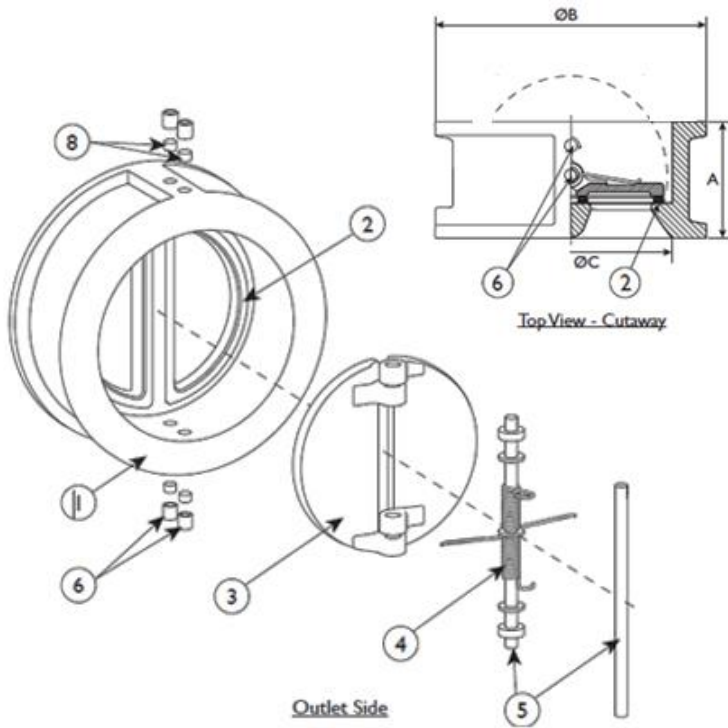




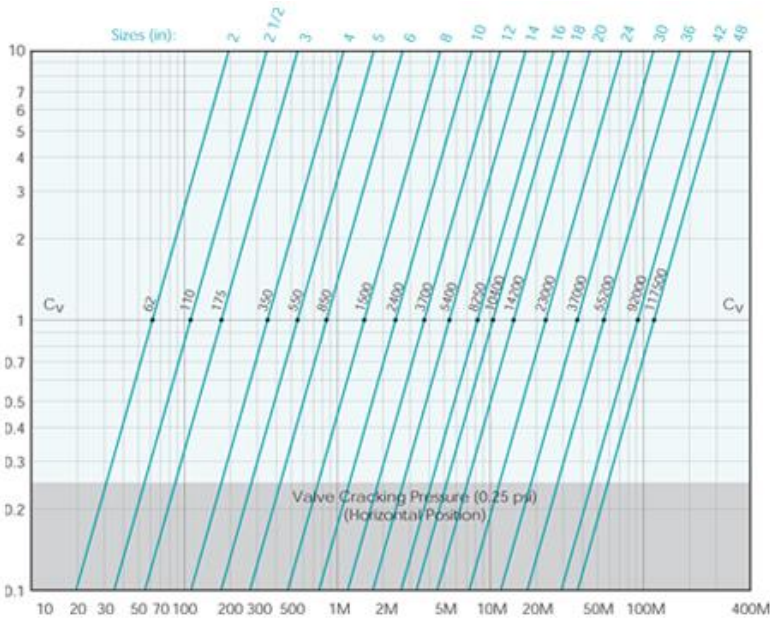
# VCDD-DW1BBT Double Disc Check Valve

Wafer Style, Class 150, Ductile Iron Body,  
Aluminum Bronze Disc, Buna-N Seat

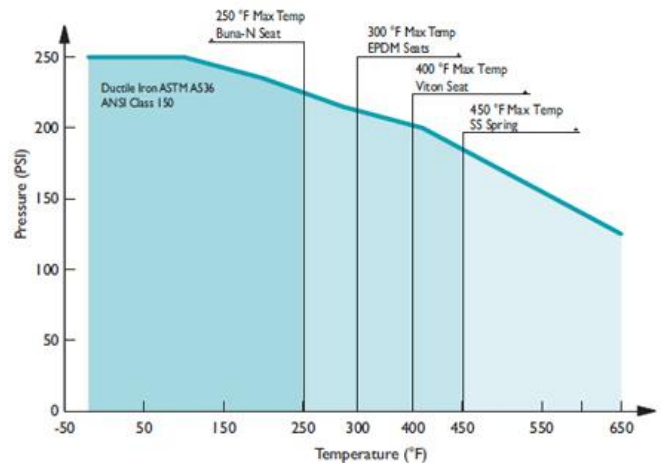


BILL OF MATERIALS		
NO.	PART	MATERIAL
1	Body	Ductile Iron ASTM A536
2	Seat	Buna-N
3	Disc	Aluminum Bronze ASTM B148
4	Spring	Stainless Steel ASTM A182 Gr. 316
5	Shaft/Stop Pin	Stainless Steel ASTM A182 Gr. 316
6	Set Screw	Galvanized Carbon Steel
7	Eye Bolt	Carbon Steel (Not Shown)
8	Seal Plug	Buna-N

DIMENSIONS & PERFORMANCE DATA														
SIZE	2	2.5	3	4	5	6	8	10	12	14	16	18	20	24
A (in)	2.12	2.38	2.62	2.62	3.25	3.75	5.00	5.50	7.12	7.25	7.50	8.00	8.38	8.75
B (in)	4.02	4.76	5.24	6.73	7.60	8.62	10.87	13.23	15.98	17.64	20.12	21.50	23.74	28.11
C (in)	2.17	2.92	3.45	4.12	5.67	6.43	8.56	10.43	12.21	14.17	16.13	17.32	20.10	23.66
E (in)	1.66	2.28	2.78	3.38	4.53	5.49	7.40	9.14	10.65	12.97	14.63	16.26	18.17	22.62
WT (lb)	3.3	5.2	7.0	14.0	18.0	26.5	43.0	70.0	108.0	175.0	200.0	258.0	345.0	460.0
Cx	62	110	175	350	550	850	1500	2400	3700	5400	8250	10400	14200	23000



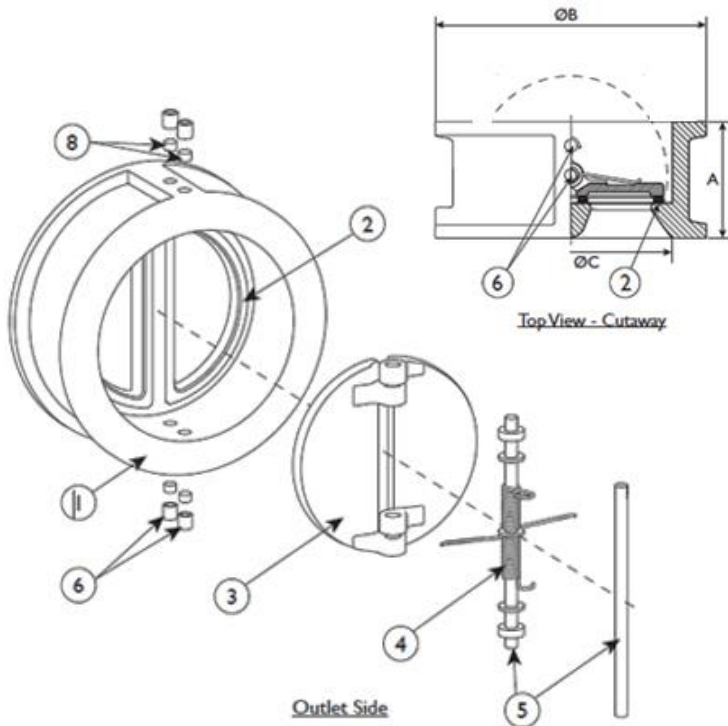
PRESS/TEMP RATINGS	
WOG	250 PSI @ 100°F
Buna-N	-20 to 250°F
Spring	450°F





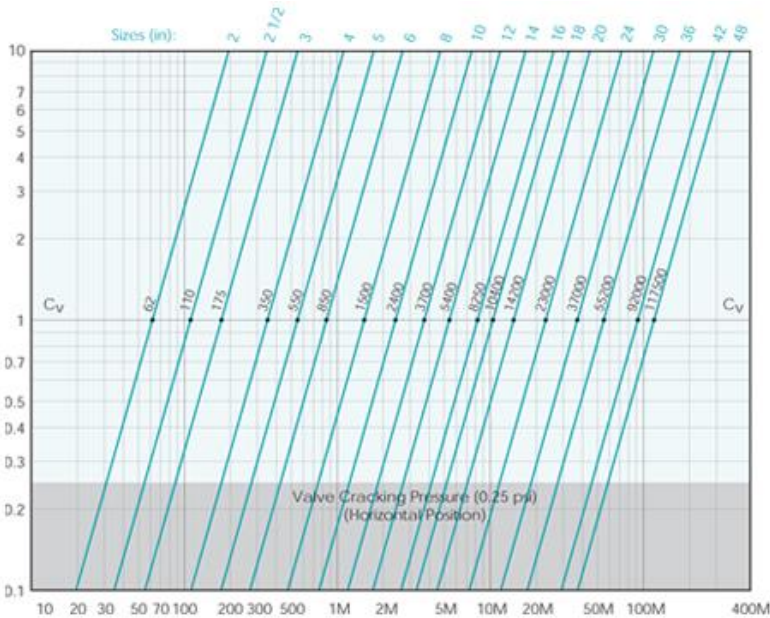
# VCDD-DW1BET Double Disc Check Valve

Wafer Style, Class 150, Ductile Iron Body, Aluminum Bronze Disc, EPDM Seat

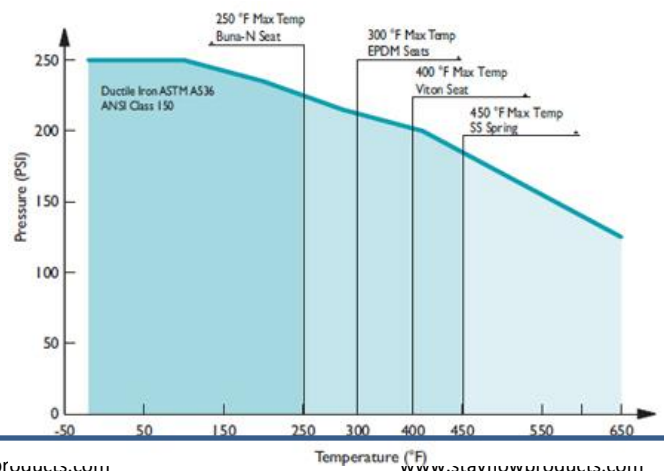


BILL OF MATERIALS		
NO.	PART	MATERIAL
1	Body	Ductile Iron ASTM A536
2	Seat	EPDM
3	Disc	Aluminum Bronze ASTM B148
4	Spring	Stainless Steel ASTM A182 Gr. 316
5	Shaft/Stop Pin	Stainless Steel ASTM A182 Gr. 316
6	Set Screw	Galvanized Carbon Steel
7	Eye Bolt	Carbon Steel (Not Shown)
8	Seal Plug	EPDM

DIMENSIONS & PERFORMANCE DATA														
SIZE	2	2.5	3	4	5	6	8	10	12	14	16	18	20	24
A (in)	2.12	2.38	2.62	2.62	3.25	3.75	5.00	5.50	7.12	7.25	7.50	8.00	8.38	8.75
B (in)	4.02	4.76	5.24	6.73	7.60	8.62	10.87	13.23	15.98	17.64	20.12	21.50	23.74	28.11
C (in)	2.17	2.92	3.45	4.12	5.67	6.43	8.56	10.43	12.21	14.17	16.13	17.32	20.10	23.66
D (in)	2.58	3.15	3.70	4.61	5.71	6.69	8.82	10.43	12.20	14.17	16.14	17.72	19.88	24.57
E (in)	1.66	2.28	2.78	3.38	4.53	5.49	7.40	9.14	10.65	12.97	14.63	16.26	18.17	22.62
WT (lb)	3.3	5.2	7.0	14.0	18.0	26.5	43.0	70.0	108.0	175.0	200.0	258.0	345.0	460.0
Cx	62	110	175	350	550	850	1500	2400	3700	5400	8250	10400	14200	23000



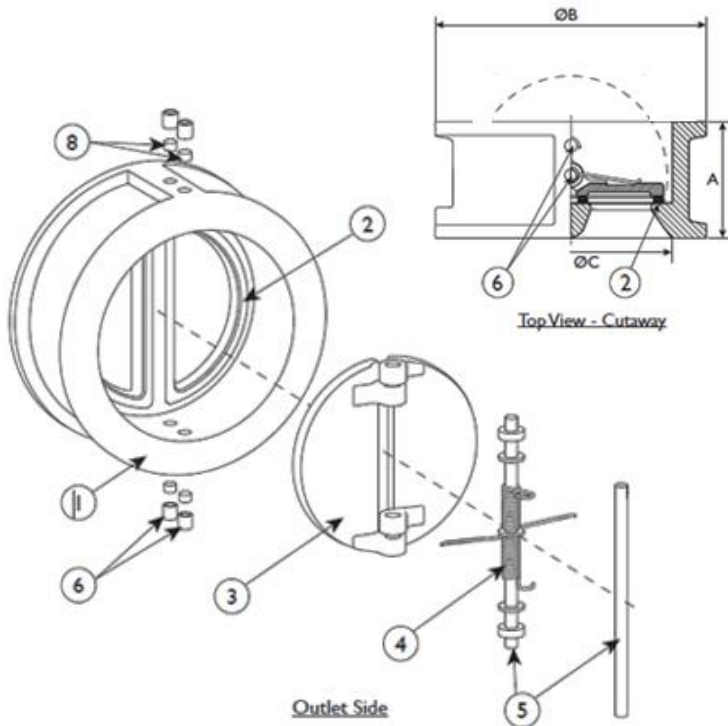
PRESS/TEMP RATINGS	
WOG	250 PSI @ 100°F
EPDM	-30 to 300°F
Spring	450°F





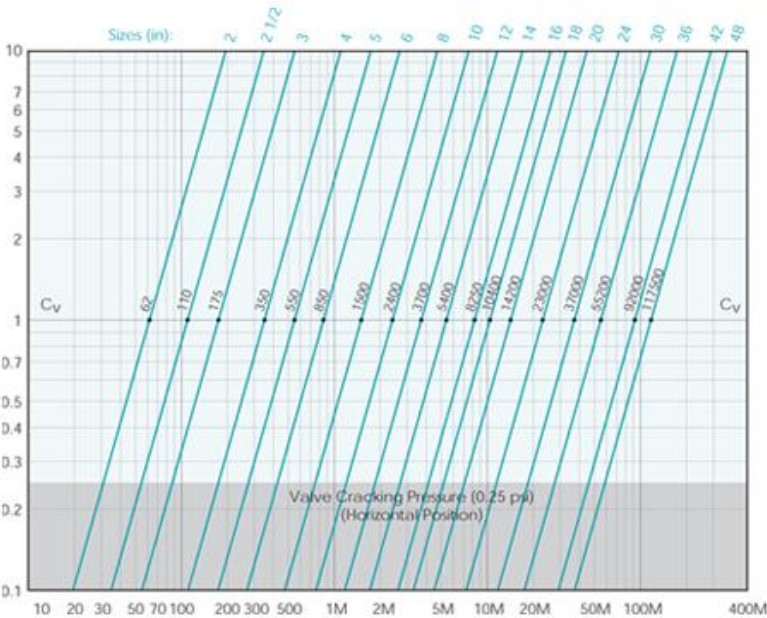
# VCDD-DW1BVT Double Disc Check Valve

Wafer Style, Class 150, Ductile Iron Body, Aluminum Bronze Disc, Viton Seat

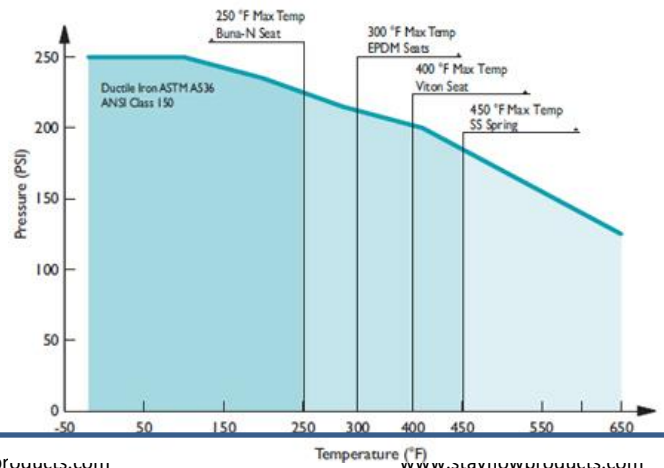


BILL OF MATERIALS		
NO.	PART	MATERIAL
1	Body	Ductile Iron ASTM A536
2	Seat	Viton
3	Disc	Aluminum Bronze ASTM B148
4	Spring	Stainless Steel ASTM A182 Gr. 316
5	Shaft/Stop Pin	Stainless Steel ASTM A182 Gr. 316
6	Set Screw	Galvanized Carbon Steel
7	Eye Bolt	Carbon Steel (Not Shown)
8	Seal Plug	Viton

DIMENSIONS & PERFORMANCE DATA														
SIZE	2	2.5	3	4	5	6	8	10	12	14	16	18	20	24
A (in)	2.12	2.38	2.62	2.62	3.25	3.75	5.00	5.50	7.12	7.25	7.50	8.00	8.38	8.75
B (in)	4.02	4.76	5.24	6.73	7.60	8.62	10.87	13.23	15.98	17.64	20.12	21.50	23.74	28.11
C (in)	2.17	2.92	3.45	4.12	5.67	6.43	8.56	10.43	12.21	14.17	16.13	17.32	20.10	23.66
D (in)	2.58	3.15	3.70	4.61	5.71	6.69	8.82	10.43	12.20	14.17	16.14	17.72	19.88	24.57
E (in)	1.66	2.28	2.78	3.38	4.53	5.49	7.40	9.14	10.65	12.97	14.63	16.26	18.17	22.62
WT (lb)	3.3	5.2	7.0	14.0	18.0	26.5	43.0	70.0	108.0	175.0	200.0	258.0	345.0	460.0
Cx	62	110	175	350	550	850	1500	2400	3700	5400	8250	10400	14200	23000



PRESS/TEMP RATINGS	
WOG	250 PSI @ 100°F
Viton	-40 to 400°F
Spring	450°F

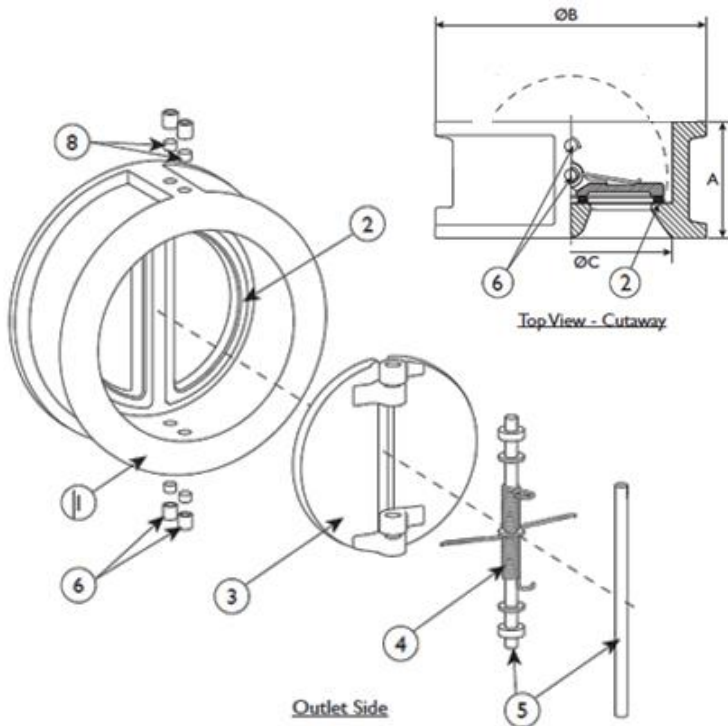






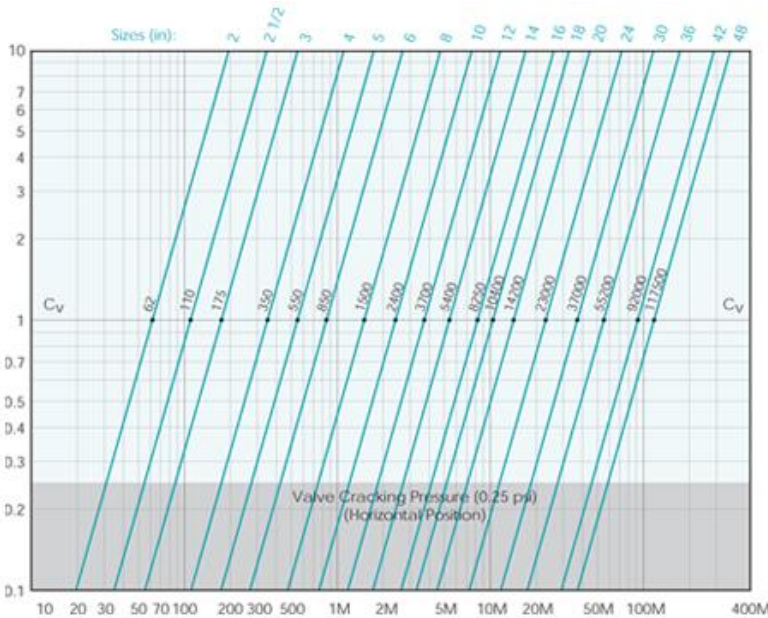
# VCDD-DW1SBT Double Disc Check Valve

Wafer Style, Class 150, Ductile Iron Body, SS Disc, Buna-N Seat

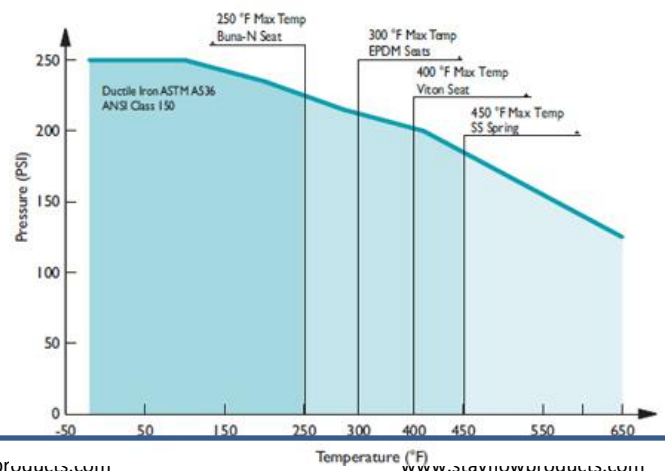


BILL OF MATERIALS		
NO.	PART	MATERIAL
1	Body	Ductile Iron ASTM A536
2	Seat	Buna-N
3	Disc	Stainless Steel ASTM A316 Gr. CF8M
4	Spring	Stainless Steel ASTM A182 Gr. 316
5	Shaft/Stop Pin	Stainless Steel ASTM A182 Gr. 316
6	Set Screw	Galvanized Carbon Steel
7	Eye Bolt	Carbon Steel (Not Shown)
8	Seal Plug	Buna-N

DIMENSIONS & PERFORMANCE DATA														
SIZE	2	2.5	3	4	5	6	8	10	12	14	16	18	20	24
A (in)	2.12	2.38	2.62	2.62	3.25	3.75	5.00	5.50	7.12	7.25	7.50	8.00	8.38	8.75
B (in)	4.02	4.76	5.24	6.73	7.60	8.62	10.87	13.23	15.98	17.64	20.12	21.50	23.74	28.11
C (in)	2.17	2.92	3.45	4.12	5.67	6.43	8.56	10.43	12.21	14.17	16.13	17.32	20.10	23.66
D (in)	2.58	3.15	3.70	4.61	5.71	6.69	8.82	10.43	12.20	14.17	16.14	17.72	19.88	24.57
E (in)	1.66	2.28	2.78	3.38	4.53	5.49	7.40	9.14	10.65	12.97	14.63	16.26	18.17	22.62
WT (lb)	3.3	5.2	7.0	14.0	18.0	26.5	43.0	70.0	108.0	175.0	200.0	258.0	345.0	460.0
Cx	62	110	175	350	550	850	1500	2400	3700	5400	8250	10400	14200	23000



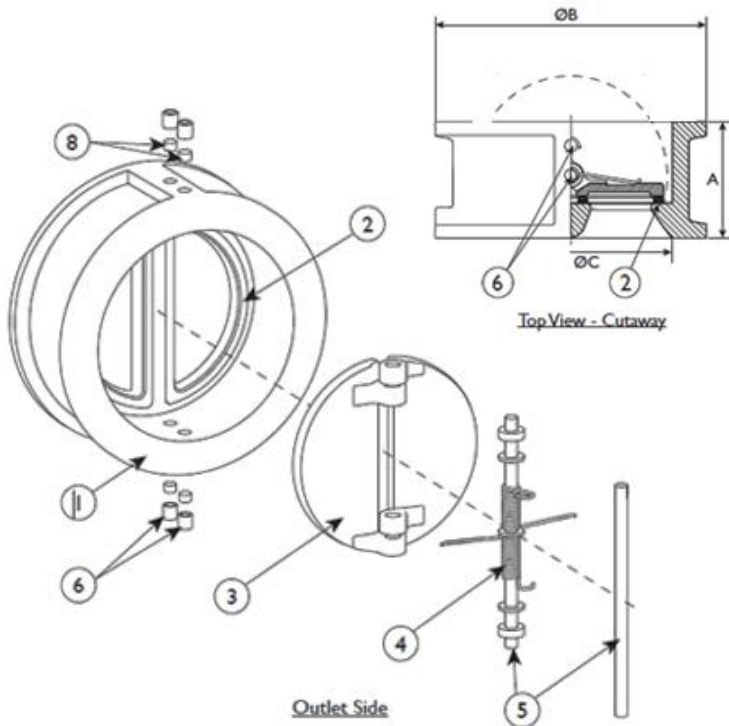
PRESS/TEMP RATINGS	
WOG	250 PSI @ 100°F
Buna-N	-20 to 250°F
Spring	450°F





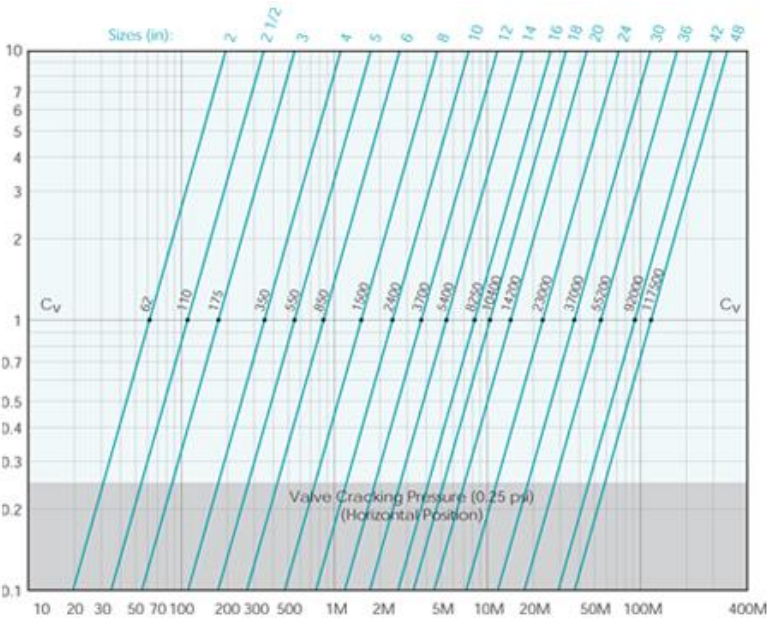
# VCDD-DW1SET Double Disc Check Valve

Wafer Style, Class 150, Ductile Iron Body, SS Disc, EPDM Seat

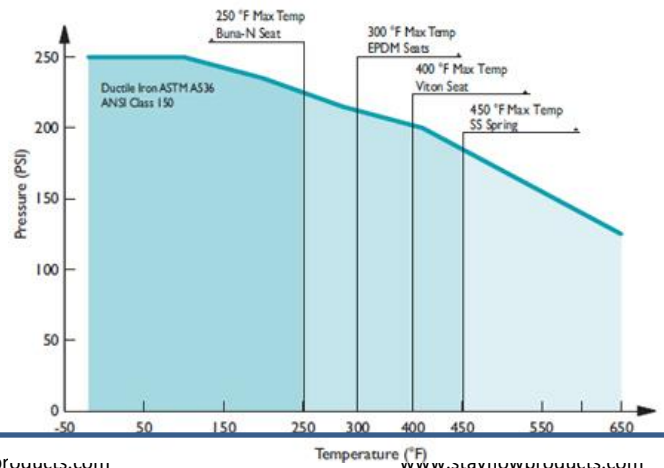


BILL OF MATERIALS		
NO.	PART	MATERIAL
1	Body	Ductile Iron ASTM A536
2	Seat	EPDM
3	Disc	Stainless Steel ASTM A316 Gr. CF8M
4	Spring	Stainless Steel ASTM A182 Gr. 316
5	Shaft/Stop Pin	Stainless Steel ASTM A182 Gr. 316
6	Set Screw	Galvanized Carbon Steel
7	Eye Bolt	Carbon Steel (Not Shown)
8	Seal Plug	Buna-N

DIMENSIONS & PERFORMANCE DATA														
SIZE	2	2.5	3	4	5	6	8	10	12	14	16	18	20	24
A (in)	2.12	2.38	2.62	2.62	3.25	3.75	5.00	5.50	7.12	7.25	7.50	8.00	8.38	8.75
B (in)	4.02	4.76	5.24	6.73	7.60	8.62	10.87	13.23	15.98	17.64	20.12	21.50	23.74	28.11
C (in)	2.17	2.92	3.45	4.12	5.67	6.43	8.56	10.43	12.21	14.17	16.13	17.32	20.10	23.66
D (in)	2.58	3.15	3.70	4.61	5.71	6.69	8.82	10.43	12.20	14.17	16.14	17.72	19.88	24.57
E (in)	1.66	2.28	2.78	3.38	4.53	5.49	7.40	9.14	10.65	12.97	14.63	16.26	18.17	22.62
WT (lb)	3.3	5.2	7.0	14.0	18.0	26.5	43.0	70.0	108.0	175.0	200.0	258.0	345.0	460.0
Cx	62	110	175	350	550	850	1500	2400	3700	5400	8250	10400	14200	23000



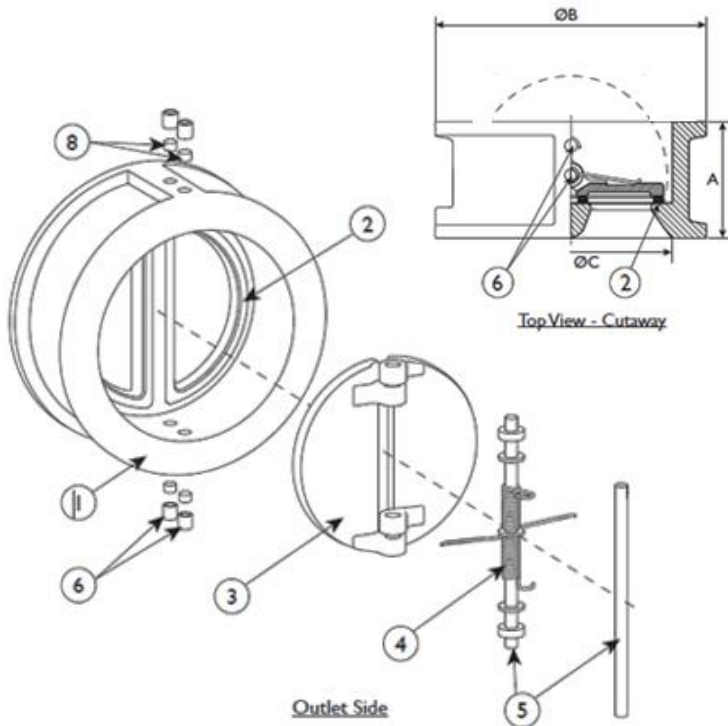
PRESS/TEMP RATINGS	
WOG	250 PSI @ 100°F
EPDM	-30 to 300°F
Spring	450°F





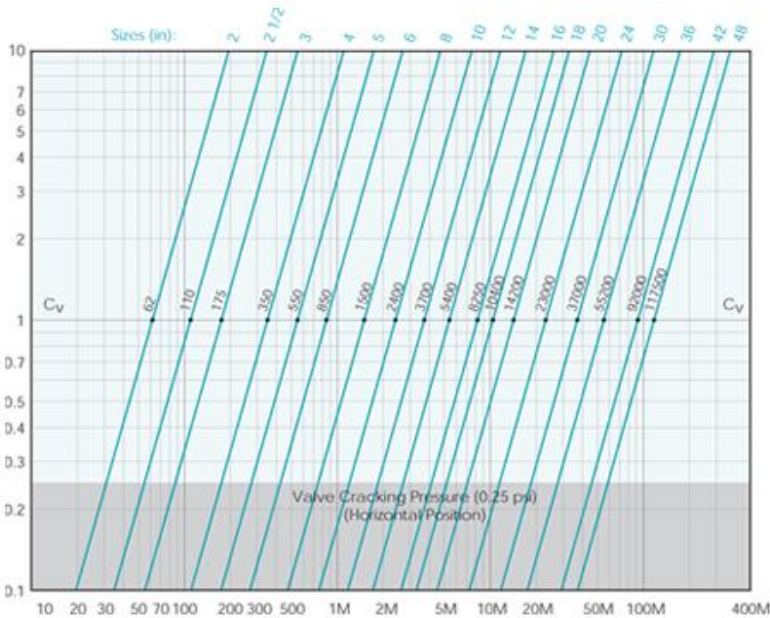
# VCDD-DW1SVT Double Disc Check Valve

Wafer Style, Class 150, Ductile Iron Body, SS Disc, Viton Seat



BILL OF MATERIALS		
NO.	PART	MATERIAL
1	Body	Ductile Iron ASTM A536
2	Seat	Viton
3	Disc	Stainless Steel ASTM A316 Gr. CF8M
4	Spring	Stainless Steel ASTM A182 Gr. 316
5	Shaft/Stop Pin	Stainless Steel ASTM A182 Gr. 316
6	Set Screw	Galvanized Carbon Steel
7	Eye Bolt	Carbon Steel (Not Shown)
8	Seal Plug	Buna-N

DIMENSIONS & PERFORMANCE DATA														
SIZE	2	2.5	3	4	5	6	8	10	12	14	16	18	20	24
A (in)	2.12	2.38	2.62	2.62	3.25	3.75	5.00	5.50	7.12	7.25	7.50	8.00	8.38	8.75
B (in)	4.02	4.76	5.24	6.73	7.60	8.62	10.87	13.23	15.98	17.64	20.12	21.50	23.74	28.11
C (in)	2.17	2.92	3.45	4.12	5.67	6.43	8.56	10.43	12.21	14.17	16.13	17.32	20.10	23.66
D (in)	2.58	3.15	3.70	4.61	5.71	6.69	8.82	10.43	12.20	14.17	16.14	17.72	19.88	24.57
E (in)	1.66	2.28	2.78	3.38	4.53	5.49	7.40	9.14	10.65	12.97	14.63	16.26	18.17	22.62
WT (lb)	3.3	5.2	7.0	14.0	18.0	26.5	43.0	70.0	108.0	175.0	200.0	258.0	345.0	460.0
Cx	62	110	175	350	550	850	1500	2400	3700	5400	8250	10400	14200	23000



PRESS/TEMP RATINGS	
WOG	250 PSI @ 100°F
Viton	-40 to 400°F
Spring	450°F

